

2000.1.4

Wednesday, November 25, 2015



Photograph and Digital Image are under copyright ©. Not for reproduction or publication.

Object Name: Lithograph
Primary Title: Young Girl
Classification: Printmaking
Artist: John Paul Jones
Date Label: 1963
Medium: Lithography
Description: Loosely rendered portrait of a woman, printed in black ink on white paper. Minimal shading or detail: black linework outlines figure from waist up, wearing shirt with deep V-neckline, long hair behind her shoulders. Figure's right eye and left arm are obscured. Portrait is situated in lower half of composition, blank space fills the rest. (N. Lawler, 2015)
Dimensions: 33 x 25.25"

2001.1.8

Wednesday, November 25, 2015

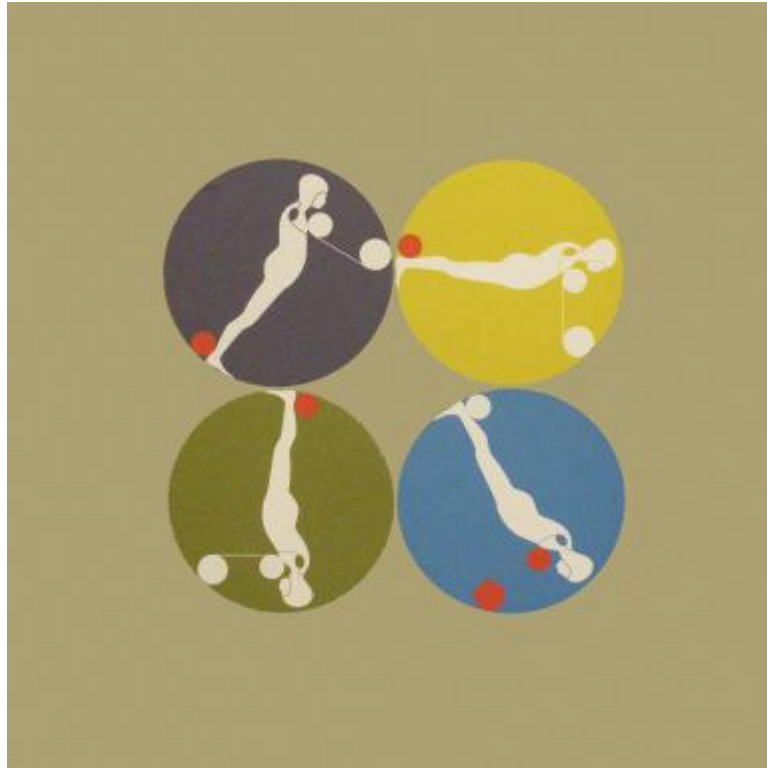


Photograph and Digital Image are under copyright ©. Not for reproduction or publication.

<i>Object Name:</i>	Lithograph
<i>Primary Title:</i>	Modern Argonaut with Horse
<i>Classification:</i>	Printmaking
<i>Artist:</i>	Roy Lichtenstein
<i>Date Label:</i>	1969
<i>Medium:</i>	Lithography
<i>Description:</i>	Geometric circular vignette of an abstracted red-and-white colored soldier wearing a helmet in the foreground, black-and-white outline of a horse to his right, black-and-white architectural forms in the background. Shallow depth of field, highly stylized geometric abstraction. Limited palette: white, red, black, green, and yellow (N. Lawler, 2015)
<i>Dimensions:</i>	28.5 x 28.5"

2001.1.15

Wednesday, November 25, 2015

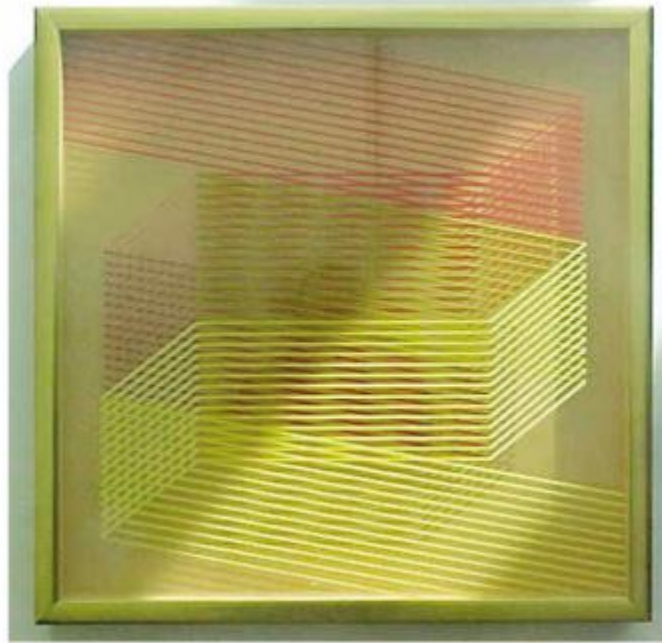


Photograph and Digital Image are under copyright ©. Not for reproduction or publication.

<i>Object Name:</i>	Lithograph
<i>Primary Title:</i>	Falling Man
<i>Classification:</i>	Printmaking
<i>Artist:</i>	Ernest Trova
<i>Date Label:</i>	1969
<i>Medium:</i>	Lithography
<i>Description:</i>	Centrally balanced composition on warm grey-brown background: four equal circles arranged in a quad, one purple, one blue, one yellow and one green. Each circle has a white silhouetted figure in its center, each depicted in a different clockwise rotation. Next to each figure are three smaller circles (12 total): one at each foot, and two next to each neck. Five of these smaller circles are red, seven are white. (N. Lawler, 2015)
<i>Dimensions:</i>	27.5 x 25.5"

2001.1.25

Wednesday, November 25, 2015



Photograph and Digital Image are under copyright ©. Not for reproduction or publication.

<i>Object Name:</i>	Painting
<i>Primary Title:</i>	Geometric Lines on Glass
<i>Classification:</i>	Painting
<i>Artist:</i>	G. Gill
<i>Date Label:</i>	Unknown
<i>Medium:</i>	Acrylic on Glass
<i>Description:</i>	Linear composition painted on two distinct layers of glass, suspended in a box frame. On the front-most layer of glass, 14 lines painted in shades of yellow zig-zag from the bottom right corner toward the center of the picture plane. Behind that layer of glass is a second layer, set back roughly 0.5" behind the other; this layer has 14 stripes painted in different shades of red, zig-zagging from top left corner to center of picture plane. Background is light brown, set back roughly 0.5" from the second layer of glass, so shadows from the first two layers are cast onto it. (N. Lawler, 2015)
<i>Dimensions:</i>	23.5 x 23.5"

2001.2.10

Wednesday, November 25, 2015



Photograph and Digital Image are under copyright ©. Not for reproduction or publication.

<i>Object Name:</i>	Lithograph
<i>Primary Title:</i>	Soft Toilet #3 on Chalk Board
<i>Classification:</i>	Printmaking
<i>Artist:</i>	Claes Oldenburg
<i>Date Label:</i>	1972
<i>Medium:</i>	Lithography
<i>Description:</i>	Blue and pink sketch of a toilet set on a green background giving it the appearance of being drawn on a chalkboard. Loose, sketchy linework. (E. Leffler, 2014)
<i>Dimensions:</i>	30 x 22.5"

2003.1.7

Wednesday, November 25, 2015



Photograph and Digital Image are under copyright ©. Not for reproduction or publication.

<i>Object Name:</i>	Painting
<i>Primary Title:</i>	Untitled
<i>Classification:</i>	Painting
<i>Artist:</i>	Marc Pally
<i>Date Label:</i>	1984
<i>Medium:</i>	Mixed media
<i>Description:</i>	Pink background behind a sharply-angled tall red shape, an angular and curvy yellow shape, and a light blue triangular shape. All of these are irregular geometric forms painted flatly; background is painted with vibrant, unblended brushwork. (E. Leffler, 2014)
<i>Dimensions:</i>	24.5 x 18.5

2004.6.1

Wednesday, November 25, 2015



Photograph and Digital Image are under copyright ©. Not for reproduction or publication.

<i>Object Name:</i>	Sculpture
<i>Primary Title:</i>	Levitating Lady II
<i>Classification:</i>	Sculpture
<i>Artist:</i>	Tony DeLap
<i>Date Label:</i>	2004
<i>Medium:</i>	Bronze
<i>Description:</i>	Small, black bronze sculpture of a curving, ribbon-like rectangular form; shape becomes wider from top to bottom. Wall-mounted. (E. Leffler, 2015)
<i>Dimensions:</i>	9 x 17"

2005.4.1

Wednesday, November 25, 2015



Photograph and Digital Image are under copyright ©. Not for reproduction or publication.

<i>Object Name:</i>	Painting
<i>Primary Title:</i>	#158
<i>Classification:</i>	Painting
<i>Artist:</i>	Roy Dowell
<i>Date Label:</i>	1979
<i>Medium:</i>	Gouache on Paper
<i>Description:</i>	In the foreground is a grey cone with a thick ring placed on top so that the point of the cone sticks out from the middle of the ring. The space is very shallow; background is yellow and dark grey-green. (M. Anderson, 2015)
<i>Dimensions:</i>	14 x 14" [Framed]

2006.11.1

Wednesday, November 25, 2015



Photograph and Digital Image are under copyright ©. Not for reproduction or publication.

<i>Object Name:</i>	Painting
<i>Primary Title:</i>	Unknowable Center
<i>Classification:</i>	Painting
<i>Artist:</i>	Kris Chatterson
<i>Date Label:</i>	2006
<i>Medium:</i>	Acrylic on Canvas
<i>Description:</i>	Blue background with heavy, dark yellow and black gestural brushstrokes across the center of the piece. Lighter-colored paint strokes are visible behind the dominant/central dark gestural shape. (E. Leffler, 2014)
<i>Dimensions:</i>	36 x 36'

2006.16.2

Wednesday, November 25, 2015

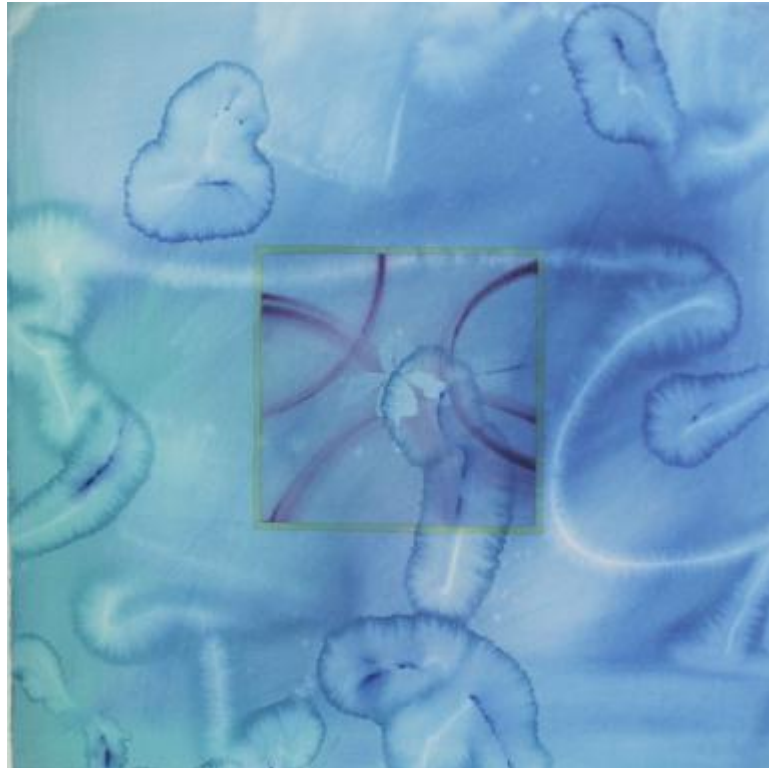


Photograph and Digital Image are under copyright ©. Not for reproduction or publication.

<i>Object Name:</i>	Lithograph
<i>Primary Title:</i>	Antilopa Passengers
<i>Classification:</i>	Printmaking
<i>Artist:</i>	Marc Chagall
<i>Date Label:</i>	1969
<i>Medium:</i>	Lithography
<i>Description:</i>	Abstract color-blocked composition with numerous figures, objects, and layered narrative elements throughout. Pink goat-like face in top right corner, blue woman's face at center left. Small moon in top left corner. Various blue and pink houses in bottom right quadrant. Orange-brown goat in bottom right corner, little orange man in bottom left corner. Background is a grey-brown color, figures and colors layered transparently on top. (M Wogahn, October 2014)
<i>Dimensions:</i>	12.25 x 9.5"

2007.8.3

Wednesday, November 25, 2015



Photograph and Digital Image are under copyright ©. Not for reproduction or publication.

<i>Object Name:</i>	Painting
<i>Primary Title:</i>	Venice Watercolor
<i>Classification:</i>	Painting
<i>Artist:</i>	Billy Al Bengston
<i>Date Label:</i>	1973
<i>Medium:</i>	Watercolor
<i>Description:</i>	Abstract watercolor painting in several shades of blue. Light teal on left side, fading into light blue and then dark blue on right side. Patches of lighter watercolor areas form abstract shapes across painting. Light green square in middle of painting. At very center (in green square) is a lightly-rendered shape of an orchid. (M Wogahn 2014)
<i>Dimensions:</i>	25 x 25"

2008.3.1

Wednesday, November 25, 2015



Photograph and Digital Image are under copyright ©. Not for reproduction or publication.

<i>Object Name:</i>	Painting
<i>Primary Title:</i>	Berlin
<i>Classification:</i>	Painting
<i>Artist:</i>	Hilary Baker
<i>Date Label:</i>	2006
<i>Medium:</i>	Acrylic Paint
<i>Description:</i>	Rendering of a stone tower in one-point perspective; a full moon is behind the tower, yet the tower appears illuminated from the front. Abstract shape resembling a pool of water at base of tower. Background color is a dark blue-black. (J. Johnson, 2014; N. Lawler, 2015)
<i>Dimensions:</i>	40 x 30"

2009.1.1

Wednesday, November 25, 2015

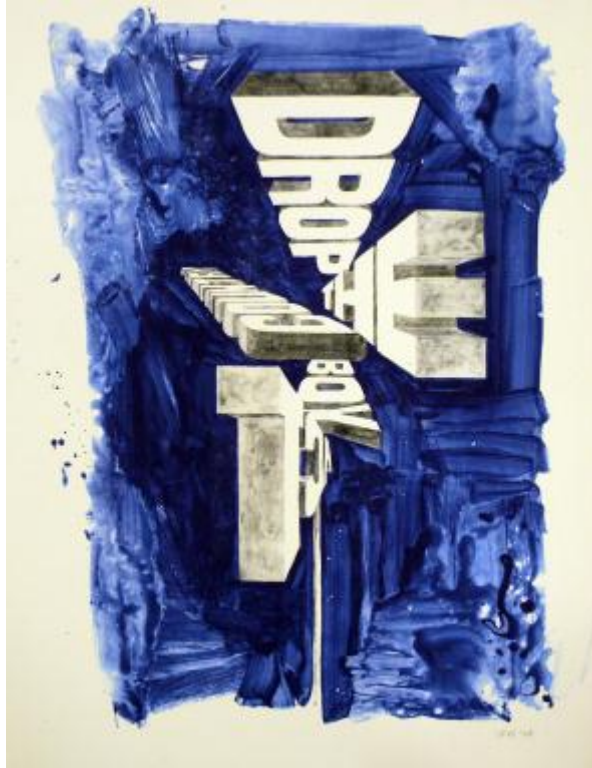


Photograph and Digital Image are under copyright ©. Not for reproduction or publication.

Object Name: Screenprint
Primary Title: McDonald's Invading Japan/Tokyo Ginza Shuffle
Classification: Printmaking
Artist: Masami Teraoka
Date Label: 1982
Medium: Screenprinting
Description: A black and white screenprint showing only the feet of three people, wearing black sandals and black patterned robes; on the ground around the feet are hamburgers, french fries, and food wrappers. (Japanese written characters?) are in lower left corner and throughout bottom half of composition. (E. Leffler, 2014; N. Lawler, 2015)
Dimensions: 12 3/8" x 29 15/16"

2009.3.1

Wednesday, November 25, 2015



Photograph and Digital Image are under copyright ©. Not for reproduction or publication.

<i>Object Name:</i>	Monoprint
<i>Primary Title:</i>	Drop the Country Boy Act
<i>Classification:</i>	Printmaking
<i>Artist:</i>	Wayne White
<i>Date Label:</i>	2008
<i>Medium:</i>	Monoprint
<i>Description:</i>	A blue brushy background is vignettted within borders of the paper; the words "DROP THE COUNTRY BOY ACT" are written in white block letters floating in one-point perspective that loosely converges at center of piece. (E. Leffler, 2014; N. Lawler 2015)
<i>Dimensions:</i>	39.5" x 30"

2009.6.1

Wednesday, November 25, 2015



Photograph and Digital Image are under copyright ©. Not for reproduction or publication.

Object Name: Photograph
Primary Title: Convergence #13
Classification: Photography
Artist: Laurie Brown
Date Label: 1995
Medium: Photography
Description: Three black-and-white photographic images arranged in one composition: lower half of composition is one long horizontal image of a desert-like landscape with a row of boxy houses in the background; above this image are two smaller duplicate images of another desert-like landscape (E. Leffler, 2014; N. Lawler, 2015)
Dimensions: 22 x 30"

2009.14.1

Wednesday, November 25, 2015



Photograph and Digital Image are under copyright ©. Not for reproduction or publication.

<i>Object Name:</i>	Painting
<i>Primary Title:</i>	Spill Oil
<i>Classification:</i>	Painting
<i>Artist:</i>	Frank Martinangeli
<i>Date Label:</i>	2008
<i>Medium:</i>	Mixed Media
<i>Description:</i>	Black paper background with six black feathers attached to the surface. None of the feathers overlap; they appear to be placed randomly, not forming any specific pattern, line, or shape. (N. Lawler, 2015)
<i>Dimensions:</i>	21.5 x 28"

2009.15.1

Wednesday, November 25, 2015

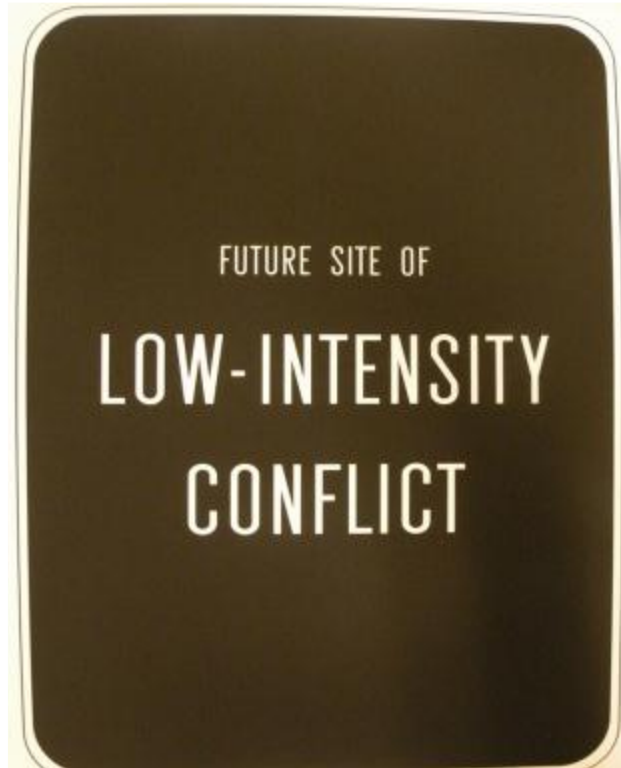


Photograph and Digital Image are under copyright ©. Not for reproduction or publication.

<i>Object Name:</i>	Painting
<i>Primary Title:</i>	Twisted Sister
<i>Classification:</i>	Painting
<i>Artist:</i>	Jason W McKechnie
<i>Date Label:</i>	2000
<i>Medium:</i>	Mixed Media
<i>Description:</i>	Thickly applied paint on light grey felt; high-saturation green circular globs of paint fixed onto surface; 3-D sculptural elements fixed to top edge of canvas and along the sides. Canvas is nearly five inches deep with many protruding elements. (N. Lawler, 2014)
<i>Dimensions:</i>	31" x 22.5" x 4.5"

2009.15.5

Wednesday, November 25, 2015



Photograph and Digital Image are under copyright ©. Not for reproduction or publication.

<i>Object Name:</i>	Screenprint
<i>Primary Title:</i>	Future Site of Low Intensity Conflict
<i>Classification:</i>	Printmaking
<i>Artist:</i>	Anthony Discenza
<i>Date Label:</i>	2009
<i>Medium:</i>	Silkscreen
<i>Description:</i>	Black background with three rows of words "FUTURE SITE OF LOW INTENSITY CONFLICT" written in white letters at center of composition (E. Leffler, 2014)
<i>Dimensions:</i>	24 x 18"

2010.2.5

Wednesday, November 25, 2015

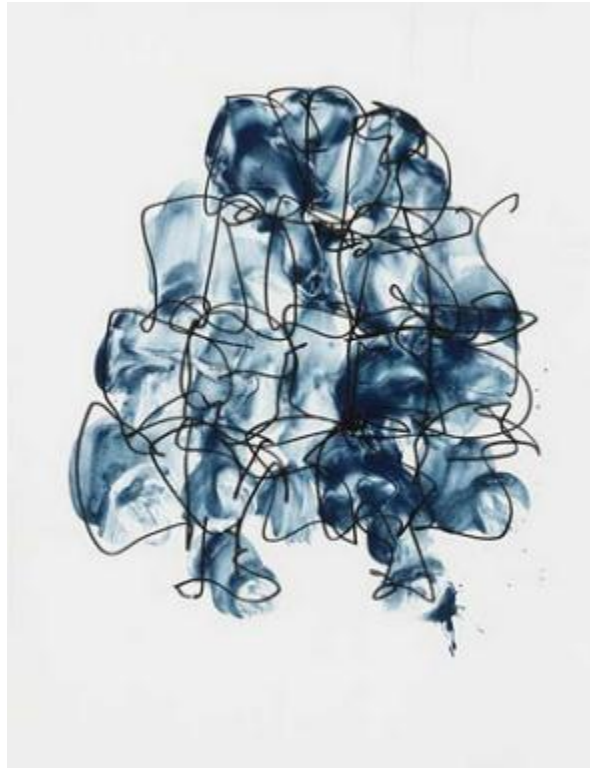


Photograph and Digital Image are under copyright ©. Not for reproduction or publication.

Object Name: Dye Transfer Photograph
Primary Title: D - Flying/Falling
Classification: Photography
Artist: John Divola
Date Label: 1987
Medium: Photography
Description: Dye transfer photograph, highly saturated color, depicting a bright pink human figure either mid-flight or mid-fall. The figure is in a wooded area, it is surrounded by a red-pink glow amid dark blue-green tones of the woods. Bright blue tree branches and a ledge are framing the left and bottom sides of the composition. Part of an edition of 20 prints. (E. Leffler, 2014)
Dimensions: 20 x 24"

2012.3.3

Wednesday, November 25, 2015



Photograph and Digital Image are under copyright ©. Not for reproduction or publication.

<i>Object Name:</i>	Lithograph
<i>Primary Title:</i>	Puzzled #5
<i>Classification:</i>	Printmaking
<i>Artist:</i>	Frank Gehry
<i>Date Label:</i>	2011
<i>Medium:</i>	Lithography
<i>Description:</i>	Two-color lithograph of washy blue swirling gestures with overlaid black outlines of loosely-drawn puzzle-piece shapes. The wash and the outline together form one central shape. This shape has four main rows of puzzle pieces, forming a rough pyramid with two loose shapes protruding from the base.(N. Lawler, 2015)
<i>Dimensions:</i>	18 x 14"

2012.5.1

Wednesday, November 25, 2015



Photograph and Digital Image are under copyright ©. Not for reproduction or publication.

<i>Object Name:</i>	Lithograph
<i>Primary Title:</i>	Untitled
<i>Classification:</i>	Printmaking
<i>Artist:</i>	Nathan Oliveira
<i>Date Label:</i>	1994
<i>Medium:</i>	Lithography
<i>Description:</i>	Depiction of a tall orange-and-white vessel on a light brown background. The vessel is drawn in the center of the composition; the entire composition is bordered by a single orange line. (N. Lawler, 2015)
<i>Dimensions:</i>	8.5 x 6.5"

2012.5.3

Wednesday, November 25, 2015



Photograph and Digital Image are under copyright ©. Not for reproduction or publication.

Object Name:

Monotype

Primary Title:

Indoor Plants

Classification:

Printmaking

Artist:

David Humphrey

Date Label:

1987

Medium:

Monotyping

Description:

An image of the corner of a blue interior space with three black and white horizontal cylinder shapes floating up from a table in the lower left corner. The shapes get larger from the bottom up, and each one has a white drooping flower emerging from it (E. Leffler, 2014)

Dimensions:

16.25 x 13"